

NPN SILICON POWER TRANSISTORS

...designed for use in low frequency power amplifier applications

FEATURES:

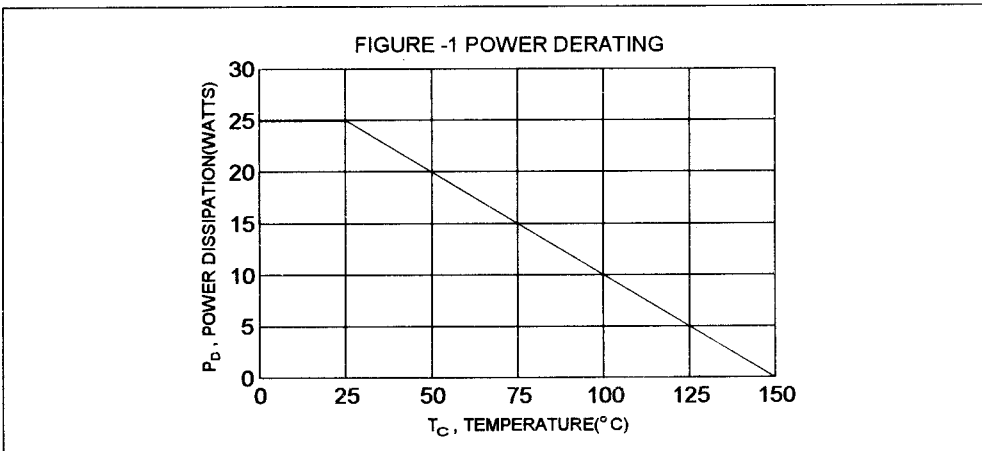
- * Low Collector-Emitter Saturation Voltage
 $V_{CE(sat)} = 1.0V(\text{Max}) @ I_C = 2.0A, I_B = 0.2A$
- * DC Current Gain
 $hFE = 35-320 @ I_C = 0.5A$
- * Complementary to PNP 2SA671

MAXIMUM RATINGS

Characteristic	Symbol	2SC1061	Unit
Collector-Emitter Voltage	V_{CEO}	50	V
Collector-Base Voltage	V_{CBO}	50	V
Emitter-Base Voltage	V_{EBO}	4.0	V
Collector Current - Continuous - Peak	I_C I_{CM}	3.0 8.0	A
Base current	I_B	0.5	A
Total Power Dissipation @ $T_C = 25^\circ\text{C}$ Derate above 25°C	P_D	25 0.2	W W/ $^\circ\text{C}$
Operating and Storage Junction Temperature Range	T_J, T_{STG}	-55 to +150	$^\circ\text{C}$

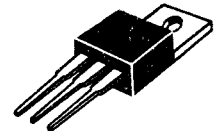
THERMAL CHARACTERISTICS

Characteristic	Symbol	Max	Unit
Thermal Resistance Junction to Case	$R_{\theta jc}$	5.0	$^\circ\text{C}/\text{W}$

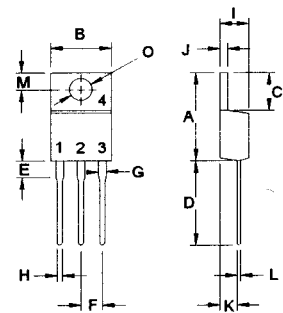


NPN
2SC1061

3.0 AMPERE
POWER
TRANSISTORS
50 VOLTS
25 WATTS



TO-220



PIN 1.BASE
2.COLLECTOR
3.EMITTER
4.COLLECTOR(CASE)

DIM	MILLIMETERS	
	MIN	MAX
A	14.68	15.31
B	9.78	10.42
C	5.01	6.52
D	13.06	14.62
E	3.57	4.07
F	2.42	3.66
G	1.12	1.36
H	0.72	0.96
I	4.22	4.98
J	1.14	1.38
K	2.20	2.97
L	0.33	0.55
M	2.48	2.98
O	3.70	3.90

ELECTRICAL CHARACTERISTICS ($T_c = 25^\circ\text{C}$ unless otherwise noted)

Characteristic	Symbol	Min	Max	Unit
----------------	--------	-----	-----	------

OFF CHARACTERISTICS

Collector-Emitter Breakdown Voltage ($I_C = 50 \text{ mA}$, $I_B = 0$)	$V_{(BR)CEO}$	50		V
Collector-Base Breakdown Voltage ($I_C = 5.0 \text{ mA}$, $I_E = 0$)	$V_{(BR)CBO}$	50		V
Emitter-Base Breakdown Voltage ($I_B = 5.0 \text{ mA}$, $I_C = 0$)	$V_{(BR)EBO}$	4.0		V
Collector Cutoff Current ($V_{CB} = 25 \text{ V}$, $I_E = 0$)	I_{CBO}		100	μA
Emitter Cutoff Current ($V_{EB} = 4.0\text{V}$, $I_C = 0$)	I_{EBO}		100	μA

ON CHARACTERISTICS (1)

DC Current Gain ($I_C = 0.1 \text{ A}$, $V_{CE} = 4.0 \text{ V}$) ($I_C = 1.0 \text{ A}$, $V_{CE} = 4.0 \text{ V}$)	$h_{FE(2)}$ $h_{FE(3)}$	35 35	320	
Collector-Emitter Saturation Voltage ($I_C = 2.0 \text{ A}$, $I_B = 200 \text{ mA}$)	$V_{CE(sat)}$		1.0	V
Base-Emitter On Voltage ($I_C = 1.0 \text{ A}$, $V_{CE} = 4.0 \text{ V}$)	$V_{BE(on)}$		1.5	V

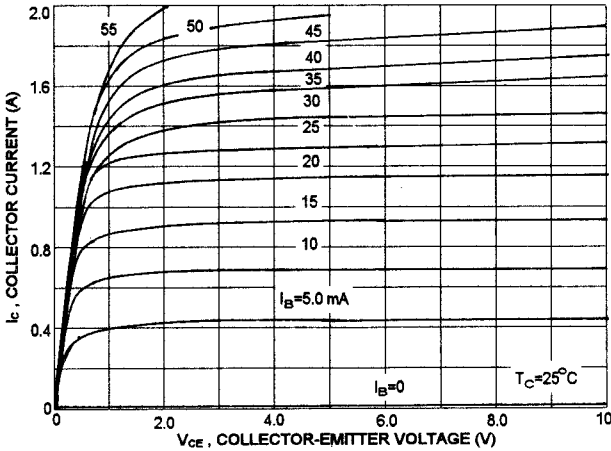
DYNAMIC CHARACTERISTICS

Current-Gain-Bandwidth Product ($I_C = 0.5 \text{ A}$, $V_{CE} = 4.0 \text{ V}$, $f = 1.0 \text{ MHz}$)	f_T	5.0		MHz
--	-------	-----	--	-----

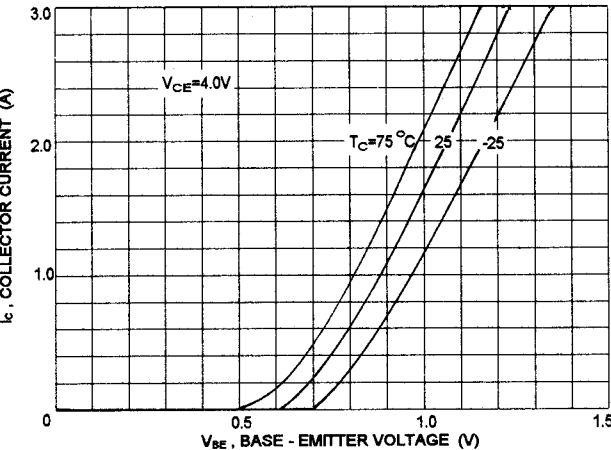
(1) Pulse Test: Pulse Width = 300 μs , Duty Cycle $\leq 2.0\%$ * $h_{FE(3)}$ Classification :

35	A	70	60	B	120	100	C	200	160	D	320
----	---	----	----	---	-----	-----	---	-----	-----	---	-----

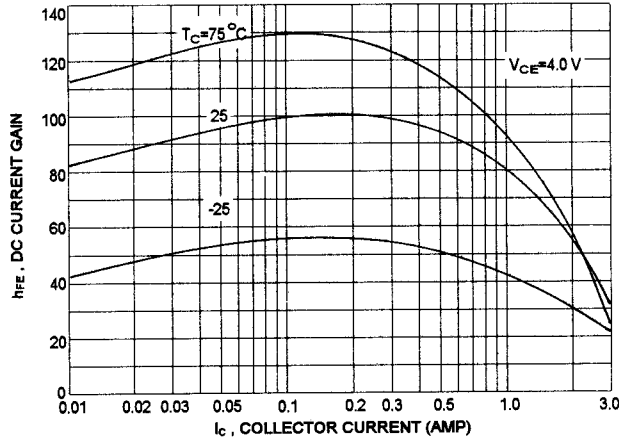
Ic - Vce



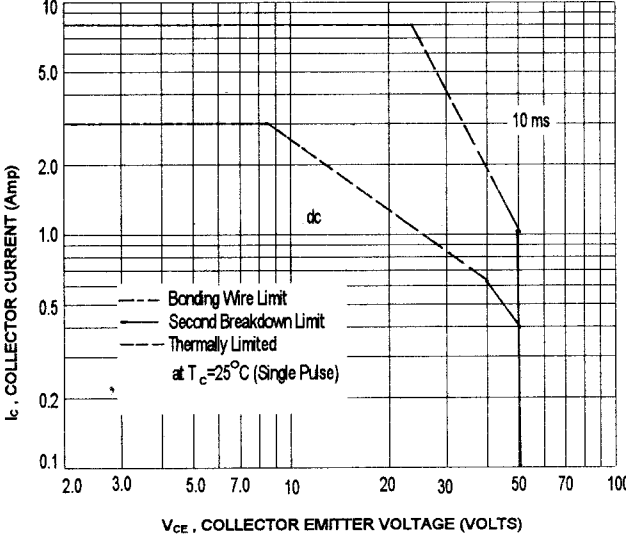
Ic - Vbe



DC CURRENT GAIN



ACTIVE-REGION SAFE OPERATING AREA (SOA)



There are two limitation on the power handling ability of a transistor: average junction temperature and second breakdown safe operating area curves indicate Ic-Vce limits of the transistor that must be observed for reliable operation i.e., the transistor must not be subjected to greater dissipation than curves indicate.

The data of SOA curve is base on Tj(PK)=150 °C; Tc is variable depending on conditions. second breakdown pulse limits are valid for duty cycles to 10% provided Tj(PK) ≤ 150°C, At high case temperatures, thermal limitation will reduce the power that can be handled to values less than the limitations imposed by second breakdown.

This datasheet has been download from:

www.datasheetcatalog.com

Datasheets for electronics components.